

MVE XC Series

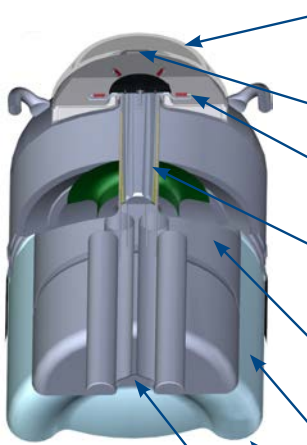


Features include

- Designed for large capacity storage
- Low liquid nitrogen consumption
- Convenient lightweight package
- XC 20 Signature includes Bend Don't Break™ & Semen Safe™ durability features

MVE XC Series tanks have capacities ranging from 700–5000 straws, and 210 to over 1000 vials. Manufactured to a world class level of excellence and backed by an industry-leading 5-year vacuum warranty, these durable, lightweight units can be relied on to perform in the most demanding of environments.

Tank Features



- A** Tamper-proof, hinged lid
- B** Locking tab
- C** Color-coded canister/lid numbering system
- D** High strength neck tube reduces liquid nitrogen loss
- E** Advanced chemical vacuum retention system
- F** Insulation to provide maximum thermal performance
- G** Strong, lightweight aluminum construction
- H** Spider design for easy retrieval and insertion of product canisters

BEND DON'T BREAK™ (Patent Pending)

After 2 years in concept testing, the new XC 20 Signature includes a new top head shape which deforms in order to absorb G-force damage to the neck area. This increases the durability of the XC 20 Signature and will make the tank more robust to MINIMIZE the damage from mishandling and transport. Although the bend concept allows for visible outside evidence that has been tipped or dropped during transport, it will be more resilient and less likely to break, minimizing the chances of product loss.

SEMEN SAFE™

With extensive testing, the new XC 20 Signature will include a stronger composite neck that is 20% stronger than the old design. This feature will allow the neck to be less susceptible to G-force damage from mishandling and transport in order to increase the durability of the XC 20 Signature. When combined with BEND DON'T BREAK™, it should minimize semen losses, which are the result of transport damage. While we've maintained the "form, fit, and function" of the MVE 20 Millennium design, SEMEN SAFE™ increases the durability of our tanks.

www.mvebio.com
844-MVE-CRYO

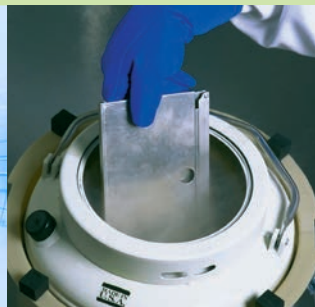
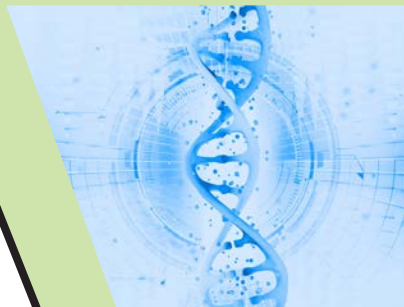
	XC 20 Signature	XC 21/6	XC 22/5	XC 32/8	XC 33/22	XC 34/18	XC 34/18 Plus	XC 43/28	XC 47/11- 65Q	XC 47/11-6	XC 47/11- 10
Maximum Storage Capacity											
Number of Canisters	6	9	6	9	6	6	6	6	6 sq.	6	10
Number of 1/2 cc Straws 10/cane	660	-	2,400	2,520	1,260	2,100	2,100	1,260	-	3,900+	3200
Number of 1/2 cc Straws 1 Level Bulk	879	3,870	3,666	3,960	1,764	3,300	3,300	1,764	-	6,200	5,000
Number of 1/2 cc Straws 2 Level Bulk	1,680	-	-	-	-	-	-	-	-	-	-
Number of 1.2 & 2.0 ml vials 5/cane	210	-	810	855	360	630	630	360	-	1,320	1,050
Number of Racks 25 Vials	-	-	-	-	-	-	-	-	750	-	-
Performance											
LN ₂ Capacity w/o Inven- tory L est.	20.5	21.0	22.4	32.0	33.4	34.8	67.5	42.2	47.4	47.4	47.4
LN ₂ Capacity w/o Inven- tory Below Spider L est.	-	-	-	-	-	-	32.7	-	-	-	-
Static Evaporation Rate* L/day	0.090	0.35	0.35	0.35	0.14	0.18	0.40	0.14	0.39	0.39	0.39
Working Duration** Full Days	142	38	40	57	154	123	136	193	76	76	76
Unit Dimensions											
Neck Opening in. (mm)	2.18 (55.4)	3.50 (89)	3.81 (97)	3.81 (97)	2.75 (70)	3.50 (89)	3.50 (89)	2.75 (70)	5.00 (127)	5.00 (127)	5.00 (127)
Overall Height in. (mm)	26.0 (660)	17.2 (438)	22.0 (559)	21.5 (546)	26.0 (660)	26.6 (675)	37.5 (952)	26.4 (670)	26.5 (673)	26.5 (673)	26.5 (673)
Overall Inner Height in. (mm)	-	-	-	-	-	-	33.5 (850)	-	-	-	-
Outer Diameter in. (mm)	14.5 (368)	18.2 (464)	14.5 (368)	18.2 (464)	18.2 (464)	18.2 (464)	18.2 (464)	20.0 (508)	20.0 (508)	20.0 (508)	20.0 (508)
Canister Height in. (mm)	11/5 (279/127)	5 (127)	11 (279)	11 (279)	11 (279)	11 (279)	11 (279)	11 (279)	-	11 (279)	11 (279)
Canister Diameter in. (mm)	1.69/1.65 (42.9/41.9)	2.59 (68)	3.09 (79)	2.62 (67)	2.22 (56)	2.8 (71)	2.81 (71)	2.22 (56)	-	4.00 (102)	2.81 (71)
Distance: Platform to Top of Neck in. (mm)	-	-	-	-	-	-	21 (533)	-	-	-	-
Weight Empty lb. (kg)	22 (10)	24 (10.9)	26 (11.8)	30 (13.6)	34 (15.4)	34 (15.4)	45.9 (20.8)	36 (16.4)	42 (19.0)	42 (19.0)	42 (19.0)
Weight Full lb. (kg)	58.4 (26.5)	61.4 (27.9)	66.0 (30)	87.0 (39.5)	94.0 (42.5)	96.0 (43.5)	104.4 (47.3)	111.0 (50.5)	120.4 (54.6)	120.4 (54.6)	120.4 (54.6)

* Static evaporation rate and static holding time are nominal. Actual rate and holding time will be affected by the nature of container use, atmospheric conditions, and manufacturing tolerances.

** Working Duration is an arbitrary reference, to estimate container performance under normal operating conditions in liquid storage. Actual working time may vary due to current atmospheric conditions, container history, manufacturing tolerances and patterns of use.

TWO Year Parts Warranty • FIVE Year Vacuum Warranty

Conforms to MDD 93/42/EEC, the Medical Device Directive for the EU.



Visit www.mvebio.com for more information.

© 2020 MVE Biological Solutions reserves the right to discontinue its products, or change the prices, materials, equipment, quality, descriptions, specifications and/or processes to its products at any time without prior notice and with no further obligation or consequence. All rights not expressly stated herein are reserved by us, as applicable.