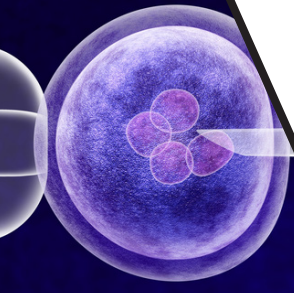


# MVE Vapor Shipper Series



## Features include

- MVE Protective Shipping Containers are recommended
- Protective shipping containers ensure upright shipping
- Low liquid nitrogen consumption
- Convenient lightweight package
- CHARGES IN TWO HOURS\*

**ADVANCED**  
QWick Charge Technology

**Charges in 2 hours**

Ref 20888994 Rev C

## Tank Features





- A** Durable, tamper-proof lid design
- B** High strength neck tube reduces liquid nitrogen loss
- C** Strong, lightweight aluminum construction
- D** Advanced chemical vacuum retention system
- E** Hydrophobic Liquid Nitrogen absorbent system

## Featuring Advanced QWick™ Charge Technology

The MVE Vapor Shipper Series is designed for the safe transportation of biological samples at cryogenic (-150°C or colder) temperatures. MVE Vapor Shipper Series utilizes the Advanced QWick Charge Technology that will charge the vapor shipper in two hours. \*New/warm tanks still need to be filled with LN<sub>2</sub> and allowed to sit for 24 hours to achieve maximum hold time. When a tank is already cold, the Advanced QWick Charge technology will apply, providing the benefit of same-day vapor shipping. Manufactured from durable, lightweight aluminum, the vapor shippers employ a hydrophobic compound which absorbs the liquid nitrogen to ensure dry, spill-free vapor-phase shipping.

MVE Protective Shipping Containers are recommended for usage. These containers may be used to ship your samples with a “non-hazardous” classification throughout the world, thus reducing costs and helping to assure sample viability.

[www.mvebio.com](http://www.mvebio.com)  
844-MVE-CRYO

|                                                             | SC 2/1V     | SC 4/2V     | SC 4/3V     | SC 20/12V   | XC 20/3V**     | XC 30/12V                    | Mini-Moover | Cryo-Moover | Cryo-Shipper                                                                        | CryoShipper XC | IATA                                                                                |
|-------------------------------------------------------------|-------------|-------------|-------------|-------------|----------------|------------------------------|-------------|-------------|-------------------------------------------------------------------------------------|----------------|-------------------------------------------------------------------------------------|
| <b>Maximum Storage Capacity</b>                             |             |             |             |             |                |                              |             |             |                                                                                     |                |                                                                                     |
| No. of Canisters                                            | 1           | 1           | 1           | 6           | 4 + 1 Canister |                              | 1           | 7           | 1 Rack                                                                              | -              | Stainless Steel Secondary Container                                                 |
| No. of 1/2 cc Straws 10/cane                                | -           | 280         | 120         | 540         | 2500/2000**    |                              | 60          | 3080        |  | -              |  |
| No. of 1/2 cc Straws 1 Level Bulk                           | 88          | 440         | 210         | 780         | 3750/3000**    | 1 (6)                        | 88          | 4354        |                                                                                     | -              |                                                                                     |
| No. of 1/4 cc Straws 1 Level Bulk                           | 182         | 938         | 452         | 1630        | 7410/6000      | Tier Rack                    | 185         | -           |                                                                                     | -              |                                                                                     |
| No. of 1.2 & 2.0 ml Vials 5/cane                            | -           | 95          | 40          | 150         | 675/560**      |                              | 20          | 945         |                                                                                     | -              | Dimensions:                                                                         |
| No. of 1.2 & 2.0 ml Vials 6/cane                            | -           | 102         | 48          | 180         | 840/672**      |                              | 24          | 1134        | 500                                                                                 | 966 (Bulk)     | 7-3/8" diameter                                                                     |
| No. of blood bags stored 4R9953                             | -           | -           | -           | -           | -              |                              | -           | -           | 10                                                                                  | 10             | 8-3/4" deep                                                                         |
| <b>Performance (Hold Time overrides NER specifications)</b> |             |             |             |             |                |                              |             |             |                                                                                     |                |                                                                                     |
| LN <sub>2</sub> Capacity L est.                             | 1.5         | 3.6         | 4.3         | 20.5        | 6.2            | 32.0                         | 2.9         | 4.2         | 8.5                                                                                 | 10.0           | 10.0                                                                                |
| Static Holding Time Days                                    | 8           | 13          | 21          | 60          | 16             | 82                           | 14          | 12          | 10                                                                                  | 14             | 14                                                                                  |
| Static Evaporation Rate* L/day                              | 0.19        | 0.26        | 0.20        | 0.09        | 0.35           | 0.22                         | 0.20        | 0.35        | 0.85                                                                                | 0.70           | 0.70                                                                                |
| <b>Unit Dimensions</b>                                      |             |             |             |             |                |                              |             |             |                                                                                     |                |                                                                                     |
| Neck Opening in (mm)                                        | 1.40 (35.0) | 2.75 (70.0) | 2.00 (51.0) | 2.18 (55.0) | 3.81 (96.7)    | 2.50 (64)                    | 1.40 (35.0) | 3.80 (97.0) | 8.50 (216.0)                                                                        | 8.50 (216.0)   | 8.50 (216.0)                                                                        |
| Overall Height in (mm)                                      | 13.5 (343)  | 18.4 (468)  | 19.4 (492)  | 25.7 (652)  | 22.0 (559)     | 24.3 (617)                   | 19.5 (495)  | 22.0 (558)  | 21.5 (546)                                                                          | 23.0 (584)     | 23.0 (584)                                                                          |
| Outside Diameter in (mm)                                    | 7.25 (184)  | 8.70 (222)  | 8.70 (222)  | 14.50 (368) | 14.50 (368)    | 17.0 (432)                   | 7.25 (184)  | 18.30 (464) | 14.50 (369)                                                                         | 15.00 (381)    | 15.00 (381)                                                                         |
| Canister Height in (mm)                                     | 5.0 (127)   | 11.0 (279)  | 11.0 (279)  | 11.0 (279)  | 11.0 (279)     | 10.27 (260.85)               | 11.0 (279)  | 11.0 (279)  | 11.0 (279)                                                                          | 12.5 (317.5)   | 8.75 (222.25)                                                                       |
| Canister Diameter in (mm)                                   | 1.20 (31)   | 2.62 (67)   | 1.81 (46)   | 1.50 (38)   | 3.20 (80)      | 1.73 (43.9) x 1.64 (41.7)*** | 1.20 (31)   | 3.10 (79)   | 5.6 (142) x 6.6 (167)***                                                            | 8.5 (216)      | 7.375 (187.325)                                                                     |
| Weight Empty lb. (kg)                                       | 6.0 (2.7)   | 10.0 (4.5)  | 11.6 (5.3)  | 28.4 (12.8) | 25.1 (11.3)    | 44 (20)                      | 9.0 (4.1)   | 30.5 (13.8) | 26.1 (11.8)                                                                         | 33.0 (15.0)    | 33.0 (15.0)                                                                         |
| Weight Charged vapor lb. (kg)                               | 8.0 (3.6)   | 17.1 (7.7)  | 19.1 (8.7)  | 44.5 (20.1) | 36.0 (16.3)    | 76 (34)                      | 13.7 (6.2)  | 40.9 (18.6) | 39.0 (17.7)                                                                         | 49.0 (22.2)    | 49.0 (22.2)                                                                         |
| Weight Full liquid lb. (kg)                                 | 9.0 (4.1)   | 20.0 (9.1)  | 21.0 (9.5)  | 64.7 (29.3) | 60.2 (27.3)    | 82 (37.2)                    | 15.5 (7.0)  | 87 (39.5)   | 54.5 (24.7)                                                                         | 73.0 (33.1)    | 73.0 (33.1)                                                                         |
| Protective Shipping Container Part No.                      | 20750408    | 20750409    | 20750409    | 11912460    | 11912460       | 21325842                     | 20750408    | 11930861    | 20750520                                                                            | 10741726       | 10741726                                                                            |

\* Without inventory

\*\* Optional center absorbent added to center canister (increases static hold time from 16 days to 18 days).

\*\*\* CryoShipper has a rectangular assembly measuring 5.6" (142 mm) by 6.6" (167 mm) with a usable height of 11.0" (279 mm).

Hold time specs actual performance may vary with atmospheric conditions, sample temperature, and usage.

**TWO Year Parts Warranty • THREE Year Vacuum Warranty**

Conforms to MDD 93/42/EEC, the Medical Device Directive for the EU.



Visit [www.mvebio.com](http://www.mvebio.com) for more information.

© 2020 MVE Biological Solutions reserves the right to discontinue its products, or change the prices, materials, equipment, quality, descriptions, specifications and/or processes to its products at any time without prior notice and with no further obligation or consequence. All rights not expressly stated herein are reserved by us, as applicable.